

Manhole & Catch Basin Adjustment Systems

Municipalities and contractors across North America are dramatically reducing construction and restoration costs, while improving the performance and durability of their manhole and catch basin structures with Lifesaver Manhole and Catch Basin Adjustment Systems.

Made of tough, durable, high-density polyethylene (HDPE), Lifesaver Manhole Adjustment Rings and Catch Basin Adjustment Frames have been proven in the field to outperform and outlast traditional concrete – especially under heavy traffic loads.

Feature & Benefits

Water-Tight Joints

Joints between rings are water-tight, eliminating infiltration of groundwater.

No Mortar Required

No more field mixing of mortar or waiting for mortar to harden. Installations can be backfilled & compacted as soon as the casting is in place.

Withstands Excessive Loads

Lifesaver rings are designed & tested to withstand of standard H-20 and HS-25 loads, thus eliminating costly restorations from settlement and break up of road surfaces.

Impervious to Corrosion

Unlike concrete, Lifesaver rings are impervious to corrosion from hydrogen sulfide acid (H₂S) common in sanitary sewers.

Installation Friendly

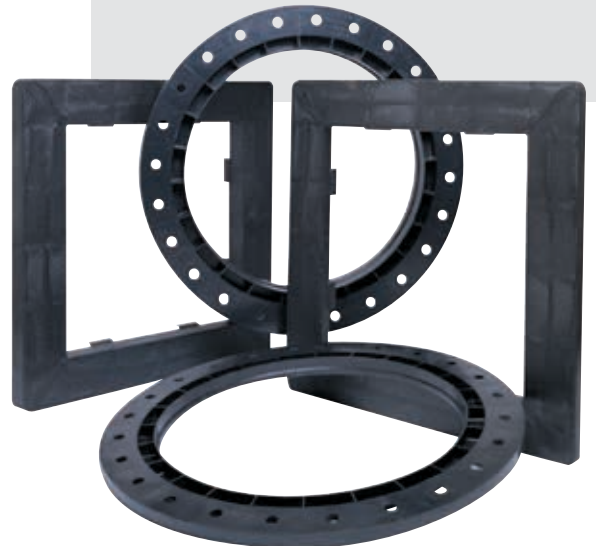
The unique design of both flat and slope rings allows precise adjustment to grade and their consistent shape and durable, warp-free construction make installation a snap!

Lightweight & Easy to Handle

Unlike heavy concrete, Lifesaver manhole rings and catch basin frames weigh a mere six pounds so they are extremely easy to carry and handle.

Feature & Benefits:

- Water-Tight Joints
- No Mortar Required
- Withstands Excessive Loads
- Impervious to Corrosion
- Installation Friendly
- Lightweight & Easy to Handle



Manhole Adjusting Ring



Catch Basin Adjusting Frame

Manhole Adjustment Units

Description	Size	Product Code
Flat Manhole Adjustment Unit	24" x 4"	074140
	24" x 2"	074141
	24" x 1-1/2"	074142
	24" x 1-1/4"	074143
Flat Manhole Adjustment Unit	27" x 4"	074245
	27" x 2"	074145
	27" x 1-1/2"	074146
	27" x 1-1/4"	074147
Flat Manhole Adjustment Unit	27" x 1/4"	074258
	30" x 4"	074002
	30" x 2-1/4"	074001
	30" x 1-1/2"	074007
Sloped Adjustment Unit	30" x 1/4"	074259
	30" x 1-1/2" to 2-1/4"	074003
	27" x 3/4" to 1-1/2"	074148
	24" x 3/4" to 1-1/2"	074144



Catch basin Adjustment Units – 24" x 24"

Description	Size	Product Code
Flat Catch Basin Adjustment Unit	2-3/4"	074077
	2"	074076
	1-1/2"	074075
	1-1/4"	074270
Sloped Catch Basin Adjustment Unit	1/4"	074260
	2" to 2-3/4"	074330
	1-1/4" to 2-3/4"	074157
	3/4" to 1-1/2"	074272



Catch basin Adjustment Units – 24" x 36"

Description	Size	Product Code
Flat Catch Basin Adjustment Unit	2-3/4"	074996
	2"	074995
	1-1/2"	074994
Sloped Catch Basin Adjustment Unit	1-1/4" to 1-3/4"	074997

Contact us

Visit our website: ipexna.com

Toll Free: (866) 473-9462

Products are manufactured by IPEX Inc.
Lifesaver® is a registered trademark.