

duraflo[®]

PRODUCT CATALOG



Innovative
designs for the
construction industry



Welcome to Duraflo[®]



Duraflo ventilation products have over 50 years of plastics manufacturing experience. This expertise allows Duraflo to continue as the innovation leader in roof ventilation. Throughout our history Duraflo has listened to you, the customer, to create solutions to meet your building needs. In developing and maintaining an open dialogue with both our internal and external partners, we have created a wide variety of unique products second to none in the marketplace.

Roof Vent Products

- pg. 4

Ridge Vent Products

- pg. 12

Exhaust Vent Products

- pg. 14

Ventilation Calculator

- pg. 19

Roof Flashing Products

- pg. 20

Gable Vent Products

- pg. 24

Siding & Soffit Vent Products

- pg. 26

Index

- pg. 31

Why Ventilate with **duraflo**®?

3

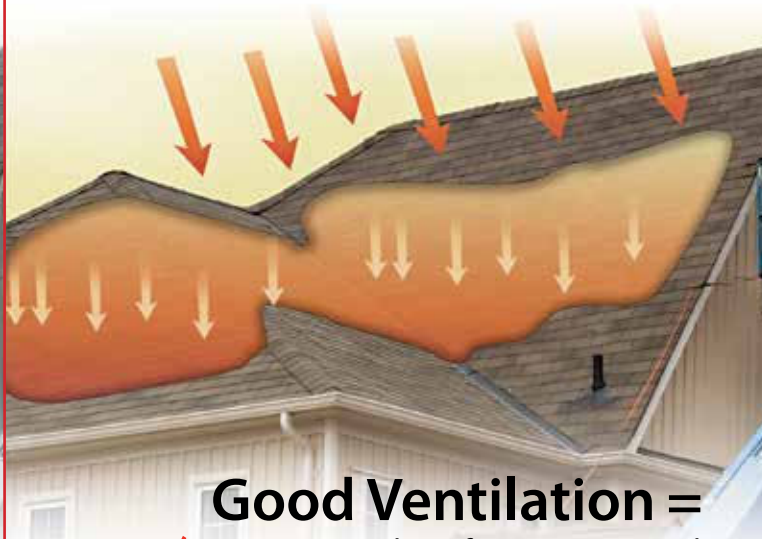
To Effectively Remove Winter Moisture

Without proper ventilation heat from the home can build in the attic space, then cool and condense, soaking the insulation and ceilings with moisture



To Drastically Remove Summer Heat

Without proper ventilation trapped summer heat builds up in the attic warming the living space below



To Protect Shingle Life Span

Proper Ventilation eliminates extreme temperature ranges, assuring the life span of the shingles



Good Ventilation =

- ✓ 1. Proper number of vents positioned correctly along the ridge line
- ✓ 2. Proper soffit ventilation to allow cool air to enter through the soffit replacing the warm air that rises through the roof vents
- ✓ 3. Did you know? Ideally, your attic temperature should approximate the outside temperature

We Know Ventilation!

Roof Ventilation



4

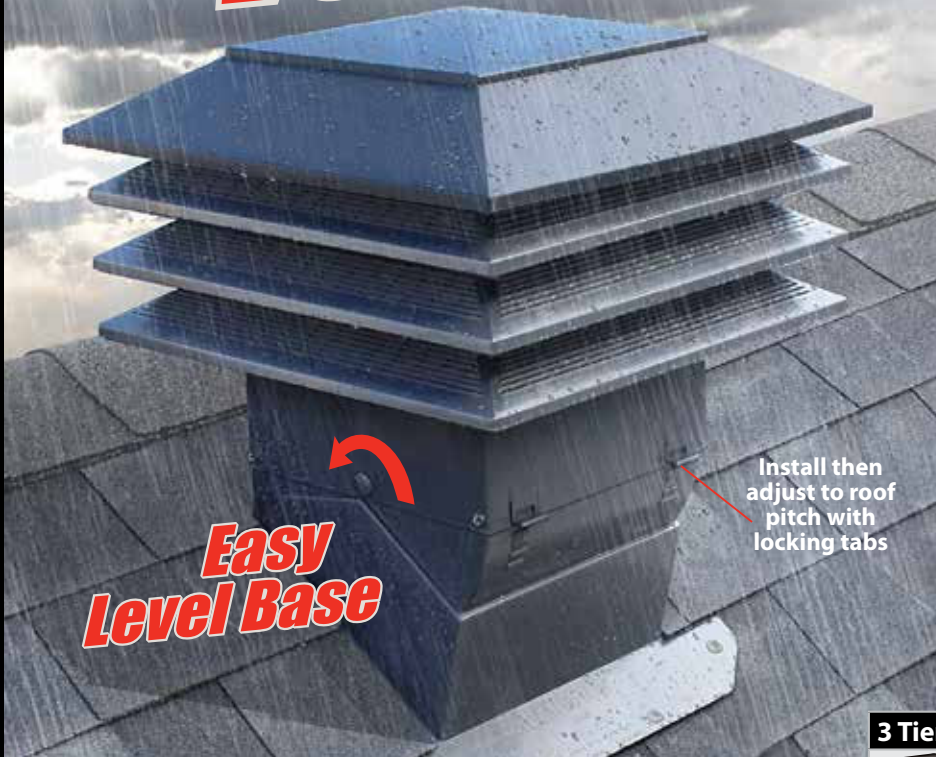
WeatherPRO® Roof Ventilation

duraflo® PRO Ventilator

- **Extreme Weather Protection for the home**
- **“Easy Level” Adjustment System reduces installation time**
- **High Performance airflow**

The PRO Ventilator’s “Easy Level” features are engineered with the contractor in mind. The lightweight, durable construction and rotating pitch adjustment system are designed to simplify the installation process saving you time and money.

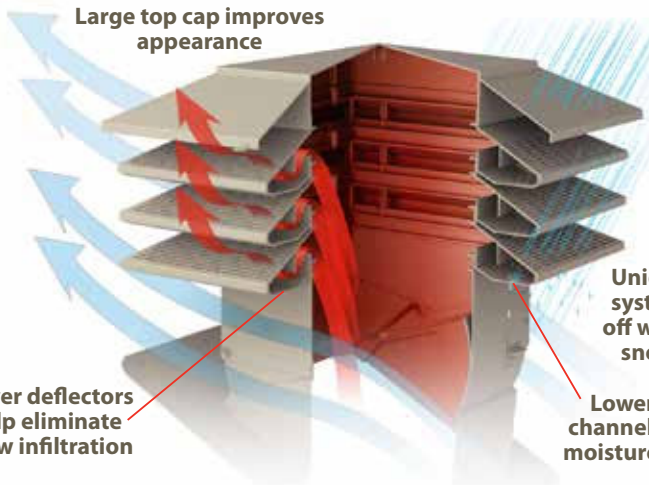
- Rotatable top with locking pitch tabs accommodate 3/12 to 12/12 roof pitches
- 55% lighter than traditional tall vent
- 48 to 130 Sq. In. NFA Venting
- Crush, dent & corrosion resistant
- Extreme cold & heat resistant
- UV & Cold impact resistant to -40
- Available in Black, Brown, Gray & Weatherwood
- U.S. Patent 9,523,509
- CDN Patent 2,792,461



Easy Level Base

Install then adjust to roof pitch with locking tabs

Large top cap improves appearance



Lower deflectors help eliminate snow infiltration

Lower drip channels allow moisture to exit


Resistant to:




Constructed for:




3 Tier Model: 130 sq. in. NFA

	DESCRIPTION	PART #	CTN. QTY.	SKID
 21-1/8" x 21-1/8" x 22"	Black	60PRO150BL	1	8
	Brown	60PRO150BR	1	8
	Gray	60PRO150G	1	8
	Weatherwood	60PRO150WW	1	8

2 Tier Model: 95 sq. in. NFA

	DESCRIPTION	PART #	CTN. QTY.	SKID
 21-1/8" x 21-1/8" x 19-1/2"	Black	60PRO140BL	1	8
	Brown	60PRO140BR	1	8
	Gray	60PRO140G	1	8
	Weatherwood	60PRO140WW	1	8

1 Tier Model: 48 sq. in. NFA

	DESCRIPTION	PART #	CTN. QTY.	SKID
 21-1/8" x 21-1/8" x 17"	Black	60PRO130BL	1	12
	Brown	60PRO130BR	1	12
	Gray	60PRO130G	1	12
	Weatherwood	60PRO130WW	1	12

duraflo[®] PRO Turbo



- Extreme Weather Protection
- No Maintenance Required
- High Performance Airflow
- Internal Baffle Protection System
- Easy Level Installation

The PROTurbo combines the field tested benefits of the patented WeatherPRO internal baffle system with multi stage, high volume, airflow for superior attic ventilation.

- Rotatable top with locking pitch tabs accommodate 3/12 to 12/12 roof pitches
- Crush, dent & corrosion resistant
- UV & Cold impact resistant to -40
- Available in Black, Brown, Gray & Weatherwood
- CDN Patents 2,536,023 & 2,803,775
- USA Patent 7,774,023
- CSA Approved

117 Sq. in. of net free area

DESCRIPTION	PART #	CTN. QTY	SKID
Black	60PRO117BL	1	12
Brown	60PRO117BR	1	12
Gray	60PRO117G	1	12
Weatherwood	60PRO117WW	1	12



Resistant to:



Constructed for:



TDI

Texas Department of Insurance

WeatherPRO[®] Roof Ventilation

We Know Ventilation!

Roof Ventilation

6

duraflo[®]

Universal

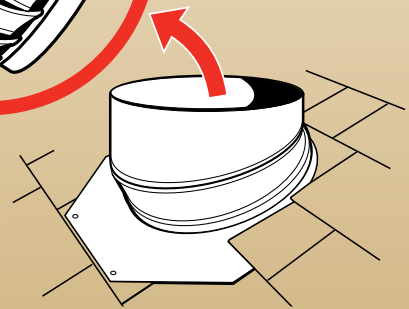
Turbine Ball Replacement



Fits 12"

& 14" bases

Replaces traditional "squeaking" turbines easily without removing existing vent base or shingles.



When using a Duraflo Turbine replacement top, Duraflo recommends replacing all Turbine tops to ensure a balanced ventilation system.

DESCRIPTION	PART #	CTN. QTY	SKID
Black	6001BL	1	24
Brown	6001BR	1	24
Gray	6001G	1	24
Weatherwood	6001WW	1	24



WeatherPRO[®] Roof Ventilation

duraflo[®] PRO Slant Back



The Intake & Exhaust multi task vent

With the WeatherPRO[®] Series PRO SlantBack you no longer need to worry about extreme weather. The unique baffle system within the WeatherPRO[®] Series wards off wind driven snow and rain.

- CSA Approved
- Patented Baffle System and Moisture Control System
- Eliminates bird nesting
- Cold impact resistant to -40°
- UV resistant polypropylene
- Can be used as an intake vent, when soffit ventilation is not an option
- Suitable for roof pitches from 3/12 to 14/12
- US Patent 9,243,813
- US Patent 9,557,074 B2

50 Sq. in. of net free area

DESCRIPTION	PART #	CTN. QTY	SKID
Black	60PRO50SLBL	8	48
Brown	60PRO50SLBR	8	48
Gray	60PRO50SLG	8	48
Weatherwood	60PRO50SLWW	8	48

Warm moist air exits in a chimney like fashion eliminating shingle stains

Moisture Control System directs and deflect precipitation away from vent openings (ribs under lid, textured flange, ribbed baffle walls, lateral flange deflectors)

Offset Vent Throat Position

Unique baffle system wards off wind driven snow and rain

Drainage openings allow for water to escape

Resistant to:



Constructed for:



WeatherPRO[®] Roof Ventilation

We Know Ventilation!

Roof Ventilation

8

WeatherPRO® Roof Ventilation

duraflo® PRO 75



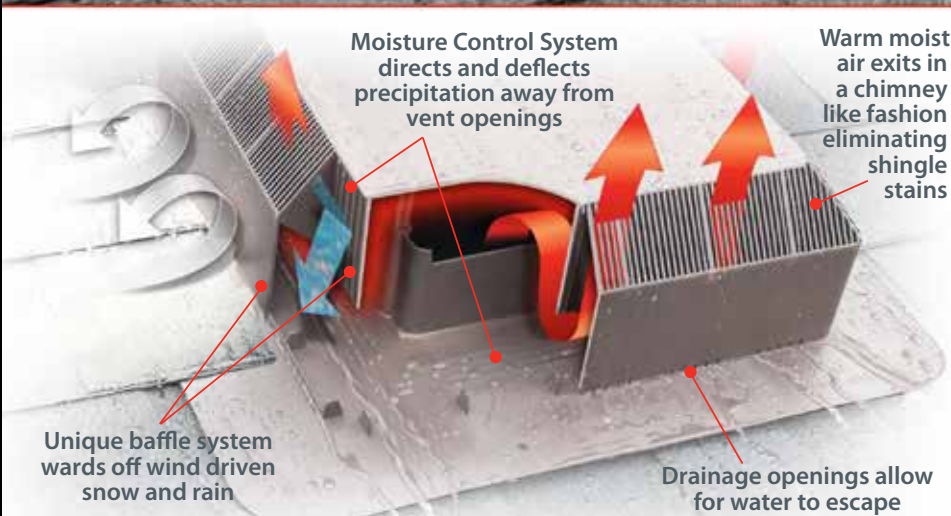
With the WeatherPRO® Series PRO75 you no longer need to worry about foul weather. The unique baffle system within the WeatherPRO® Series PRO75 wards off driving snow and blistering rain.

- Eliminates bird nesting
- Cold impact resistant to -40°
- UV resistant polypropylene
- Suitable for roof pitches from 3/12 to 14/12
- CSA Approved

CDN. Patent 2,766,888

75 Sq. in. of net free area

DESCRIPTION	PART #	CTN. QTY	SKID
Black	60PRO75BL	4	32
Brown	60PRO75BR	4	32
Gray	60PRO75G	4	32
Weatherwood	60PRO75WW	4	32



Resistant to:



WIND SNOW RAIN UV CRUSHING & DENTING

Constructed for:



COLD INSTALLATIONS LIGHTWEIGHT HANDLING CSA APPROVAL

duraflo[®] PRO50



With the WeatherPRO[®] Series PRO50 you no longer need to worry about foul weather. The unique baffle system within the WeatherPRO[®] Series PRO50 wards off driving snow and blistering rain.

- Eliminates bird nesting
- Cold impact resistant to -40°
- UV resistant polypropylene
- Suitable for roof pitches from 3/12 to 14/12
- CSA Approved

CDN. Patent 2,364,672

U.S. Patent 6,767,281

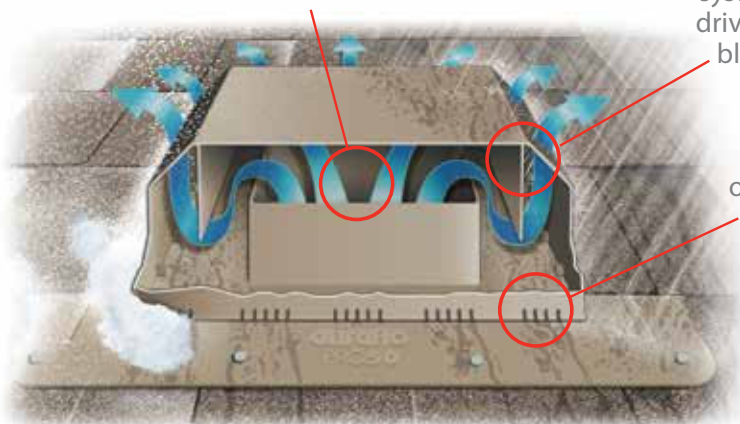
50 Sq. in. of net free area

DESCRIPTION	PART #	CTN. QTY	SKID
Black	60PRO50BL	9	54
Brown	60PRO50BR	9	54
Gray	60PRO50G	9	54
Weatherwood	60PRO50WW	9	54

Warm moist air exits in a chimney like fashion eliminating shingle stains

Unique baffle system wards off driving snow and blistering rain

Drainage openings allow for water to escape



Resistant to:



WIND SNOW RAIN UV CRUSHING & DENTING

Constructed for:



COLD INSTALLATIONS LIGHTWEIGHT HANDLING CATEGORY 2 HURRICANE RATED CSA APPROVAL

TDI

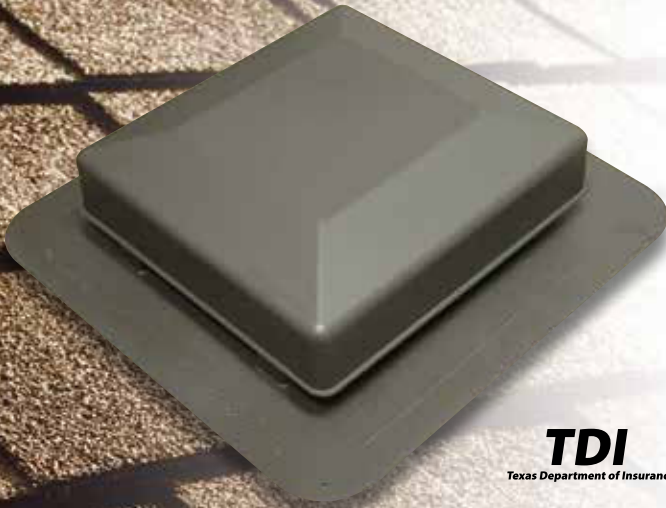
Texas Department of Insurance

We Know Ventilation!

Roof Ventilation

10

Roof Ventilation



TDI
Texas Department of Insurance



duraflo[®]

Square Top Roof Vent

An attractive low profile style

- UV resistant polypropylene
- Molded screen to prevent bird nesting
- Angled throat to efficiently deflect water
- Cold impact resistant to -40°
- Suitable for roof pitches from 3/12 to 12/12

75 Sq. in. of net free area

DESCRIPTION	PART #	CTN. QTY	SKID
Black	6075BL	5	80
Brown	6075BR	5	80
Gray	6075G	5	80
Weatherwood	6075WW	5	80

50 Sq. in. of net free area

DESCRIPTION	PART #	CTN. QTY	SKID
Black	6050BL	10	80
Brown	6050BR	10	80
Gray	6050G	10	80
Weatherwood	6050WW	10	80



TDI
Texas Department of Insurance



duraflo[®]

6050T Tall Roof Vent

Works and looks great with wood shakes or shingles

- UV resistant polypropylene
- Extended throat for ease of installation with shake and shingle
- Cold impact resistant to -40°
- Suitable for roof pitches from 3/12 to 12/12

50 Sq. in. of net free area

DESCRIPTION	PART #	CTN. QTY	SKID
Black	6050TBL	12	216
Brown	6050TBR	12	216
Gray	6050TG	12	216
Weatherwood	6050TWW	12	216

duraflo[®]

Slant Back Roof Vent

Ideal for steep pitched roofs

- Low profile with a slanted back
- Will not scratch, crush or dent
- Suitable for roof pitches from 3/12 to 14/12

61 Sq. in. of net free area

DESCRIPTION	PART #	CTN. QTY	SKID
Black	6065BL	12	144
Brown	6065BR	12	144
Gray	6065G	12	144
Weatherwood	6065WW	12	144



duraflo[®]

Shed Light Roof Vent Translucent Skylight Vent

A Skylight for Storage Sheds, Garages and Barns

- 50 & 75 sq. in. of net free area
- Lets in free natural light
- Ventilates hot air and fumes
- Wide flange for ease of installation



75 Sq. in. of net free area

DESCRIPTION	PART #	CTN. QTY	SKID
75 sq. in.	5975C	5	80
75 sq. in.	5975B	6	96

50 Sq. in. of net free area

DESCRIPTION	PART #	CTN. QTY	SKID
50 sq. in.	5950C	6	96



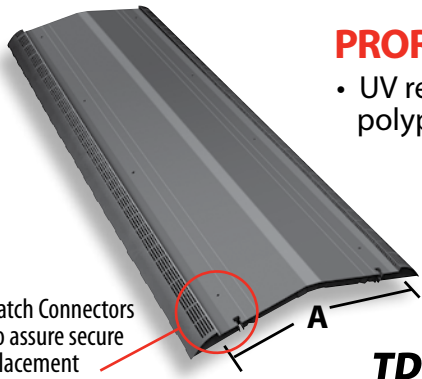
We Know Ventilation!

Ridge Ventilation

12

WeatherPRO® Ridge Ventilation

duraflo® PRO Ridge



PRORidge SOLID

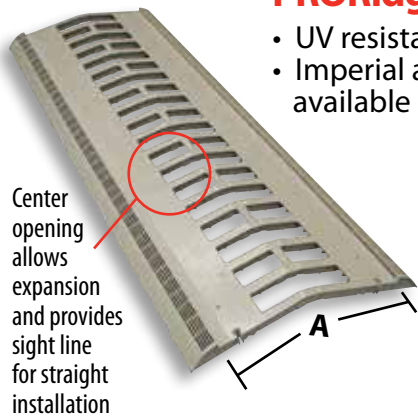
- UV resistant polypropylene

Latch Connectors to assure secure placement

TDI
Texas Department of Insurance



DESCRIPTION	PART #	A	CTN. QTY
Black	6094BL	12-1/4	12



PRORidge

- UV resistant polypropylene
- Imperial and metric sizes available

Center opening allows expansion and provides sight line for straight installation

TDI
Texas Department of Insurance



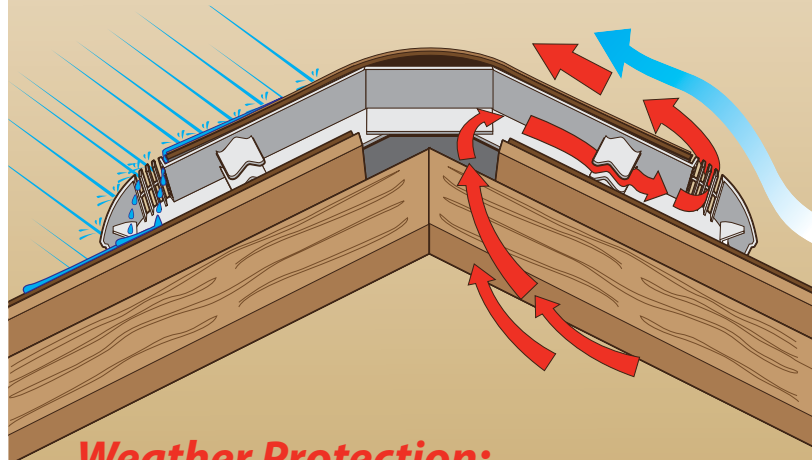
DESCRIPTION	PART #	A	CTN. QTY
Metric - Black	6072METBL	12-7/8	12
Metric - Brown	6072METBR	12-7/8	12
Metric - Weatherwood	6072METWW	12-7/8	12
Imperial - Black	6073BL	11-5/8	12



AirFoil
TECHNOLOGY

WeatherPRO® baffle system with AirFoil technology

- Models 6072 & 6073 CSA Approved
- 18.3 sq. in./lin. ft. of net free area
- UV resistant polypropylene
- Molded nail supports
- Code regulated insect grill
- U.S. & metric sizes available
- TriFold flexibility for use on pitches 3/12 to 12/12
- Hand nail only
- U.S. Patent 8,069,621



Weather Protection:

WeatherPRO® patented **internal baffles** deflect water and snow, allowing it to drain harmlessly out the drainage openings. Designed to allow high airflow while providing excellent defense against weather infiltration.

duraflo® Ridge Roll



TDI
Texas Department of Insurance

- TDI approved
- Nail gun installation
- Embossed nail line for quick application
- Durable and compression resistant
- Externally baffled for powerful protection against rain, snow & insect infiltration
- Available in Filter and Non- Filter
- Nails Included
- 12.75 sq. in./lin. ft. of net free area
- Length: 25 ft. rolls
- Width: 14-3/4"
- Thickness: 5/8"

DESCRIPTION	PART #	CTN. QTY	SKID
Black	6025BL	1	18
Black w/filter	6025BLF	1	18



duraflo® Ridge Roll

100% Natural Fiber



TDI
Texas Department of Insurance

- TDI approved
- Easy installation
- Nails included
- 15 sq. in./lin. ft. of net free area
- Length: 20 ft. rolls
- Width:
 - 60RVA20MET - 11-1/2"
 - 60RVA208 - 8"
 - 60RVA20US - 10-1/2"
- Thickness: 3/4"

DESCRIPTION	PART #	CTN. QTY	SKID
Black	60RVA20MET	1	36
Black	60RVA208	1	-
Black	60RVA20US	1	36



We Know Ventilation!

Exhaust Ventilation



duraflo® Gooseneck ROOF EXHAUST VENT

14

Roof Exhaust Ventilation

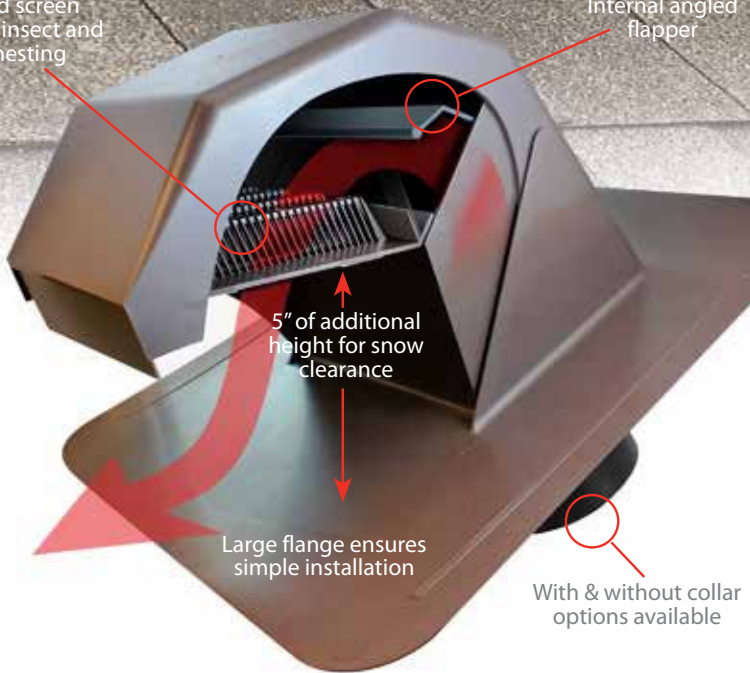
For high performance bathroom fans and standard rangehood fans

- Weather protection with 5" of additional height for snow clearance
- Patented design adds additional weather protection, directs and deflects precipitation away from vent openings
- Flapper can still open with low performance bath fans
- Attaches to 4", 5" or 6" duct
- Additional collar available which fits a 6", 7" or 8" duct
- Available in: black, brown
- 20 sq. in. of net free area if used as an intake vent (remove flapper)
- US Patent 10,267,533



Molded screen prevents insect and bird nesting

Internal angled flapper



5" of additional height for snow clearance

Large flange ensures simple installation

With & without collar options available

60PRO30 GOOSENECK BATHROOM EXHAUST VENT - WITH COLLAR

Can be used with standard rangehood fans

DESCRIPTION	PART #	CTN. QTY.	SKID
Black	60PRO30BL	1	24
Brown	60PRO30BR	1	24

60PRO31 GOOSENECK BATHROOM EXHAUST VENT - WITHOUT COLLAR

Can be used with standard rangehood fans

DESCRIPTION	PART #	CTN. QTY.	SKID
Black	60PRO31BL	1	24
Brown	60PRO31BR	1	24

GOOSENECK VENT ADAPTER COLLAR 4", 5", 6"

DESCRIPTION	PART #	CTN. QTY.	SKID
Black	6030-4BC	8	144

Resistant to:



Constructed for:



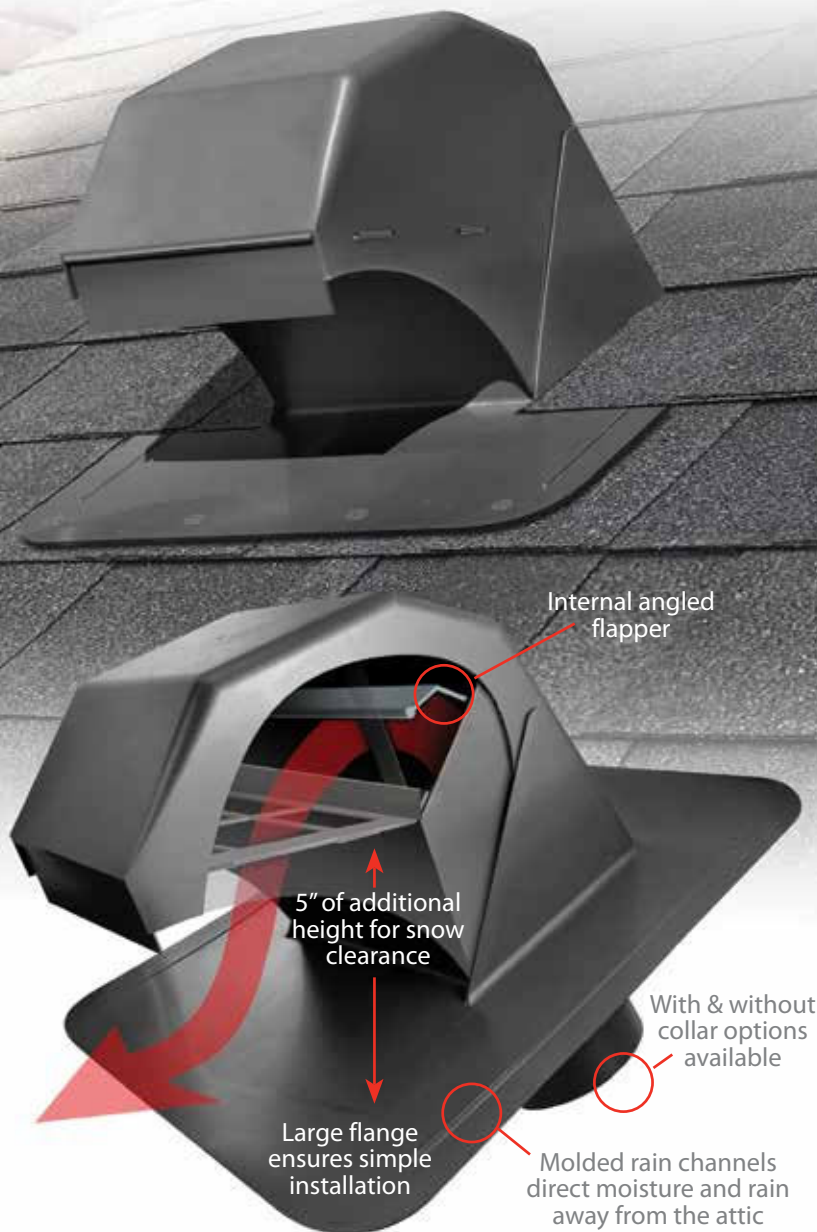
duraflo[®] Gooseneck

ROOF **DRYER** EXHAUST VENT



**Ideal for
condominiums,
townhouses,
apartment buildings
and homes with
an upstairs laundry
room**

- Provides weather protection with 5" of additional height for snow clearance
- Attaches to 4", 5" or 6" duct
- Additional collar available which fits a 6", 7" or 8" duct
- Available in: black, brown
- US Patent 10,267,533



**6032
GOOSENECK ROOF DRYER
EXHAUST VENT - WITH COLLAR**

DESCRIPTION	PART #	CTN. QTY.	SKID
Black	6032BL	1	24
Brown	6032BR	1	24

**6033
GOOSENECK ROOF DRYER
EXHAUST VENT - WITHOUT COLLAR**

DESCRIPTION	PART #	CTN. QTY.	SKID
Black	6033BL	1	24
Brown	6033BR	1	24

**GOOSENECK VENT ADAPTER
COLLAR 4", 5", 6"**

DESCRIPTION	PART #	CTN. QTY.	SKID
Black	6030-4BC	8	144

Resistant to:



Constructed for:



Roof Exhaust Ventilation

We Know Ventilation!



Bathroom Exhaust Vent with Flapper & Attached Collar

- Seamless leakproof body
- Exhausts bathroom fan through the roof
- Attaches to 4" or 5" duct
- Code regulated insect grill

DESCRIPTION	PART #	CTN. QTY	SKID
Black	6011BL	6	108
Brown	6011BR	6	108
Weatherwood	6011WW	6	108



Bathroom Exhaust Vent with Flapper & Unattached Collar

- Seamless leakproof body
- Collar is detached to allow trades to work independently
- Exhausts bathroom fan through the roof
- Attaches to 4" or 5" duct
- Insect grill

DESCRIPTION	PART #	CTN. QTY	SKID
Black	6010BL	8	144
Brown	6010BR	8	144

Includes CSA approved 6008 model vent



Bathroom Exhaust Vent with Flapper

- Seamless leakproof body
- Exhaust bathroom fan through the roof
- Attaches to 4" or 5" duct
- Code regulated insect grill

DESCRIPTION	PART #	CTN. QTY	SKID
Black	6008BL	4	192
Brown	6008BR	4	192
Weatherwood	6008WW	4	192



Bathroom Exhaust & Roof Dryer Vent Adapter Collar

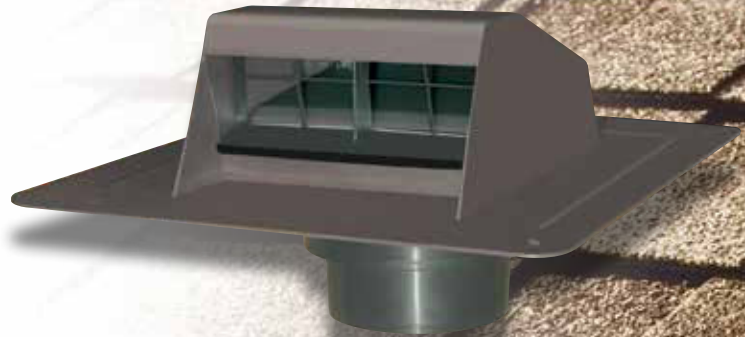
- Attaches to 4" or 5" duct

DESCRIPTION	PART #	CTN. QTY	SKID
Black	6010-1BC	8	384

Roof Dryer Vent with Flapper & Attached Collar

- Seamless leakproof body
- Attaches to 4" or 5" duct
- Large grill openings for safe dryer venting

DESCRIPTION	PART #	CTN. QTY	SKID
Black	6013BL	6	108
Brown	6013BR	6	108
Weatherwood	6013WW	6	108



Roof Dryer Vent with Flapper

- Seamless leakproof body
- Exhausts clothing dryer through the roof
- Ideal for condominiums, town-houses, apartments and 2nd story laundry rooms
- Large grill openings for safe dryer venting

DESCRIPTION	PART #	CTN. QTY	SKID
Black	6012BL	4	192
Brown	6012BR	4	192



Rangehood Exhaust Vent & Attached Collar

- Seamless leakproof body
- Vents kitchen range hoods and other large exhaust fans through the roof
- Attaches to 6", 7" or 8" duct
- Dual flapper system to prevent back draft and weather infiltration

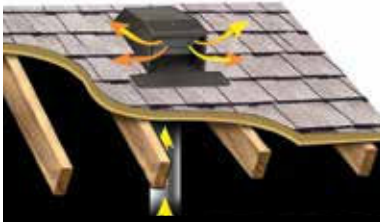
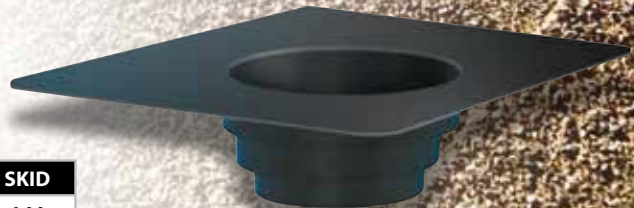
DESCRIPTION	PART #	CTN. QTY	SKID
Black	6020BL	2	24
Brown	6020BR	2	24



Rangehood Exhaust Vent Adapter Collar

- Attaches to 6", 7" or 8" duct

DESCRIPTION	PART #	CTN. QTY	SKID
Black	6021-4BC	8	144



We Know Ventilation!

Exhaust Ventilation

18

Roof Exhaust Ventilation

duraflo[®] **Adapter Collar** WITH **BUILT-IN FLAPPER**

Turn a roof vent into a bathroom exhaust vent!



Combine the weather protection of PROslantBack with bathroom exhaust fans!

- Built-in flapper prevents back draft
- Large nailable flange works with any roofing system
- Ideal for new home construction and existing homes
- Easily installs from the top of the roof deck or from inside the attic
- Fits 4", 5" or 6" flexible duct
- Available in black only
- US Patent 10,180,260

Install roof vent over new adapter collar

Dual flapper design

DESCRIPTION	PART #	SIZE	CTN. QTY.	SKID
Black	6035BL	14" x 14"	4	72

duraflo[®] Ventilation Calculator

HOW MANY VENTS DO YOU NEED?

A home requires an equal amount of intake (soffit) & exhaust (roof) ventilation

Ventilation requirements for your home

VENT	NET FREE AREA OF VENT	NUMBER OF VENTS PER			
		1000 sq. ft.	1500 sq. ft.	2000 sq. ft.	2500 sq. ft.
WEATHERPRO PROVENTILATOR - 3 TIER	130 sq. in.	1	2	3	4
WEATHERPRO PROVENTILATOR - 2 TIER	95 sq. in.	2	3	4	5
WEATHERPRO PROVENTILATOR - 1 TIER	48 sq. in.	4	6	8	10
WEATHERPRO PROTURBO	117 sq. in.	1	2	3	4
WEATHERPRO 60PRO50	50 sq. in.	5	8	10	12
WEATHERPRO 60PRO75	75 sq. in.	4	5	7	8
WEATHERPRO RIDGE VENTS	72 sq. in.	4	5	7	10
WEATHER PRO SLANT BACK	50 sq. in.	5	8	10	12
6050 SQUARE TOP	50 sq. in.	5	8	10	12
6075 SQUARE TOP	75 sq. in.	4	5	7	8
6065 SLANT BACK	61 sq. in.	4	6	8	9
RIDGE ROLL - 20ft	300 sq. in.	16 ft.	24 ft.	32 ft.	40 ft.

Notes:

- Pitches 3/12 to 12/12
- Roof pitches under 4/12 require double the amount of ventilation
- Use this chart to determine how many vents your attic requires
- The included ventilation calculator is only a guide, please consult your local building code for specific ventilation requirements

duraflo[®] Roof Flashings

20

Roof Flashings

duraflo[®]

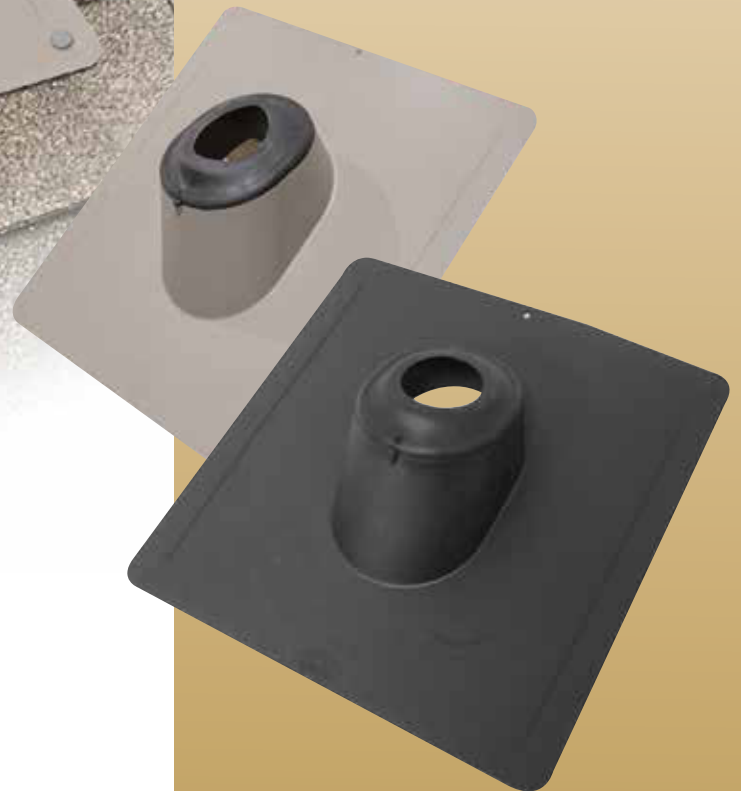
Thermoplastic

**Base
Flashing**



- Suitable for roof pitches from 2/12 to 12/12
- UV resistant polypropylene
- Built in water deflectors
- Cold impact resistant to -40°

DESCRIPTION	PART #	CTN. QTY	SKID
PIPE SIZE 1.5" FLANGE SIZE 15" x 9-1/4"			
Black	551201BL	12	576
PIPE SIZE 2" FLANGE SIZE 15" x 9-1/4"			
Black	551202BL	12	576
PIPE SIZE 3" FLANGE SIZE 15" x 12"			
Black	551203BL	12	384
Weatherwood	551203WW	12	384
PIPE SIZE 4" FLANGE SIZE 15-1/2" x 12"			
Black	551204BL	12	384



duraflo® StretchFit



PIPE FLASHING



MODEL: 551222
1.5"-2"
Pipe Sizes

MODEL: 551224
3"-4"
Pipe Sizes



The PermOseal® StretchFit requires no adjustment, no cutting and no tearing!

The new PermOseal® StretchFit flashing by Duraflo® is a breakthrough in flashing seal technology.

- UV resistant polypropylene
- Built in water deflectors
- Fits roof pitches from 2/12 to 12/12
- Available in Black, Brown, Gray and Weatherwood

StretchFit seal fits 1.5" - 2" and 3" - 4" vent pipe sizes

DESCRIPTION	PART #	CTN. QTY	SKID
PIPE SIZE 1.5" to 2" FLANGE SIZE 9.25" x 13"			
Black	551222BL	12	576
Brown	551222BR	12	576
Gray	551222G	12	576
Weatherwood	551222WW	12	576
PIPE SIZE 3" to 4" FLANGE SIZE 12" x 15.5"			
Black	551224BL	12	384
Brown	551224BR	12	384
Gray	551224G	12	384
Weatherwood	551224WW	12	384



We Know Ventilation!

duraflo® Roof Flashings



22

Roof Flashings



duraflo®

Multiple 3 in 1

*Cut & Peel
for 1.5" to 3"
vent pipe sizes*

Size
FLASHING

- Suitable for roof pitches from 2/12 to 12/12
- UV resistant polypropylene
- Built in water deflectors
- Cold impact resistant to -40°

DESCRIPTION	PART #	CTN. QTY	SKID
PIPE SIZE 1.5" to 3" FLANGE SIZE 12" x 15"			
Black	551233BL	12	384
Black Bulk	551233BULKBL	40	640



duraflo®

Multiple 5 in 1

*Open & Peel
for 1.25" to 4"
vent pipe sizes*

Size
FLASHING

- Thermoplastic material
- Suitable for pitches 3.5/12 to 12/12
- UV & Cold impact resistant
- Built-in water deflectors

DESCRIPTION	PART #	CTN. QTY	SKID
PIPE SIZE 1.25" to 4" FLANGE SIZE 13" x 13"			
Black	551244BL	12	192



duraflo® Flexible

BASE FLASHING

Engineered material stays flexible in extreme cold conditions

- Suitable for roof pitches from 2/12 to 12/12
- UV resistant polypropylene
- Built in water deflectors
- Cold impact resistant to -40°

DESCRIPTION	PART #	CTN. QTY	SKID
PIPE SIZE 2" FLANGE SIZE 13" x 15"			
Black	551142BL	12	384
PIPE SIZE 3" FLANGE SIZE 16-1/4" x 18"			
Black	551143BL	12	192
PIPE SIZE 4" FLANGE SIZE 16-1/4" x 18"			
Black	551144BL	12	192



Steep Roof Flashing

- Patented one-piece design
- Easy installation with thermoplastic base
- Suitable for pitches from 2/12 to 20/12
- Tear away ring sizing for different pipe sizes
- Double seal, No-Calk® water tight collar

DESCRIPTION	PART #	CTN. QTY	SKID
PIPE SIZE 1.5" - 3" FLANGE SIZE 11-1/4" x 19"			
Black	5511930	6	180
PIPE SIZE 3" - 4" FLANGE SIZE 13" x 20-1/8"			
Black	5511931	6	180



We Know Ventilation!



Cathedral Gable Vents

DESCRIPTION	PART #	NET FREE AREA	CTN. QTY	SKID
22" x 28" White	626110-00	93 sq. in.	6	48

Octagon Gable Vents

DESCRIPTION	PART #	NET FREE AREA	CTN. QTY	SKID
22" x 22" White	626060-00	59 sq. in.	6	72
22" x 22" White	626060-00B	59 sq. in.	8	96
19" x 19" White	626058-00	46 sq. in.	6	72
19" x 19" White	626058-00B	46 sq. in.	8	96

Round Gable Vents

DESCRIPTION	PART #	NET FREE AREA	CTN. QTY	SKID
22" White	626055-00	55 sq. in.	6	72
22" White	626055-00B	55 sq. in.	8	96
19" White	626053-00	43 sq. in.	6	72
19" White	626053-00B	43 sq. in.	8	96

Square Gable Vents

DESCRIPTION	PART #	NET FREE AREA	CTN. QTY	SKID
17" X 17" White	626045-00	46 sq. in.	6	72
17" X 17" White	626045-00B	46 sq. in.	7	84
15" X 15" White	626043-00	37 sq. in.	6	72
15" X 15" White	626043-00B	37 sq. in.	7	84

Rectangular Gable Vents

DESCRIPTION	PART #	NET FREE AREA	CTN. QTY	SKID
17" X 23" White	626080-00	70 sq. in.	6	72
17" X 23" White	626080-00B	70 sq. in.	8	96
15" X 21" White	626075-00	59 sq. in.	6	72
15" X 21" White	626075-00B	59 sq. in.	7	84
22" X 28" White	626120-00	101 sq. in.	6	48

Half Moon Gable Vents

DESCRIPTION	PART #	NET FREE AREA	CTN. QTY	SKID
34" X 23" White	626095-00	116 sq. in.	5	40

Standard Gable Vents

	DESCRIPTION	PART #	NET FREE AREA	CTN. QTY	SKID
Ⓢ	11" X 10" White	620808	21 sq. in.	12	768
Ⓢ	15" X 15" White	621212	54 sq. in.	12	324
Ⓢ	11" X 14" White	620812	33 sq. in.	12	576
Ⓢ	11" X 18" White	620816	60 sq. in.	12	336
	15" X 20.5" White	621218	72 sq. in.	12	324

Recessed Gable Vents

	DESCRIPTION	PART #	NET FREE AREA	CTN. QTY	SKID
Ⓢ	11" X 10" White	620808REC	20 sq. in.	12	768
Ⓢ	11" X 14" White	620812REC	33 sq. in.	12	576
Ⓢ	15" X 15" White	621212REC	51 sq. in.	13	351

Combined Gable Vents

	DESCRIPTION	PART #	NET FREE AREA	CTN. QTY	SKID
Ⓢ	11" x 20" White	620808COMB	20 sq. in.	8	288
Ⓢ	11" X 14" White	620812COMB	33 sq. in.	6	-
Ⓢ	15" X 15" White	621212COMB	51 sq. in.	6	162

Combined Vents

Ultimate in gable weather protection

- Can be installed to display raised profile or reversed to show recessed profile
- Inverted rear vents block weather infiltration, directing it downward back out of the vent
- Combined Gable Vents provide air flow while helping to block extreme weather infiltration



We Know Ventilation!

Foundation Vent

All-In-One Block Application

- Standard U.S. Block
- Metric Block
- Queen Brick



DESCRIPTION	PART #	NET FREE AREA	CTN. QTY	SKID
Black	649000BL	51 sq. in.	12	288
Gray	649000G	51 sq. in.	12	288

Round Soffit Vent

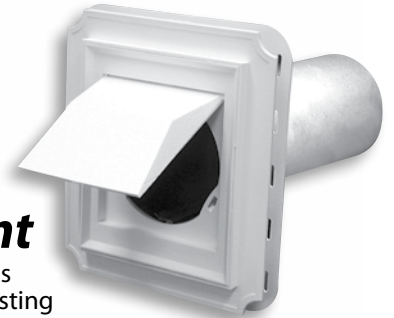
- 4"
- Flush mount with molded grill



DESCRIPTION	PART #	NET FREE AREA	CTN. QTY	SKID
White	646020-00	6.38 sq. in	60	3840

Dryer Vent

- Siding applications
- Eliminates bird nesting



DESCRIPTION	PART #	CTN. QTY	SKID
White	641010-00	6	96
White	641010-00B	25	800

Meter Mount Plate

- 17-5/8" X 15-7/8"



DESCRIPTION	PART #	NET FREE AREA	CTN. QTY	SKID
White	645080-00	NA	10	-

6" Wall Vent

- Works as intake or exhaust



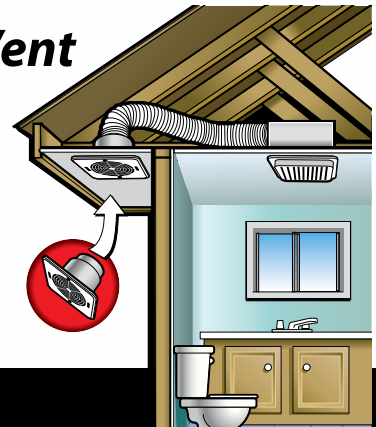
DESCRIPTION	PART #	CTN. QTY	SKID
Without Collar			
White	646010-00	30	1890
With Collar			
White	646025-00	12	756

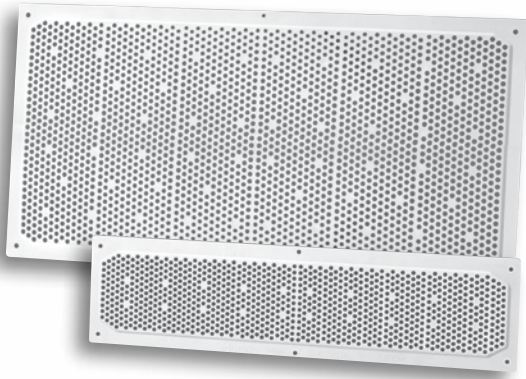


Bathroom Soffit Exhaust Vent

- Easy installation and flush mount finish
- No need to penetrate the roof or wall
- Unique flapper prevents back draft
- Attaches to 4" or 5" duct

DESCRIPTION	PART #	CTN. QTY	SKID
White	646015	6	216
Brown	646015BR	6	216





Plastic Soffit Vents

- Installs easily under eaves
- Small louvers guard against weather and insect infiltration
- 2 - 16" x 4" soffit vents = 1-50 sq. in. roof vent
- 2 - 16" x 8" soffit vents = 2-50 sq. in. roof vent

DESCRIPTION	PART #	NET FREE AREA	CTN. QTY	SKID
16" X 4" White	641604	18.6 sq. in.	36	9720
16" X 4" Brown	641604BR	18.6 sq. in.	36	9720
16" X 8" White	641608	45.5 sq. in.	36	4860
16" X 8" Brown	641608BR	45.5 sq. in.	36	4860



8 Ft. Plastic Soffit Strip

- Easy to install
- Used to provide continuous soffit ventilation
- 2" wide

DESCRIPTION	PART #	NET FREE AREA	CTN. QTY	SKID
8 Ft. White	648FTWH	69 sq. in.	25	-
8 Ft. Brown	648FTBR	69 sq. in.	25	-
8 Ft. Black	648FTBL	69 sq. in.	25	-

Mini Louvers

- Plastic
- Molded grill

Available in full box quantities only



DESCRIPTION	PART #	NET FREE AREA	CTN. QTY	SKID
1.0"	61PML101	0.20 sq. in.	100	90000
1.5"	61PML151	0.43 sq. in.	100	38400
2.0"	61PML201	0.66 sq. in.	100	10000
2.5"	61PML251	1.31 sq. in.	100	14000
3.0"	61PML301	1.77 sq. in.	100	14000
4.0"	61PML401	2.85 sq. in.	50	7000
5.0"	61PML501	3.80 sq. in.	20	2880
6.0"	61PML601	5.20 sq. in.	20	1620

Mini Louvers

- Aluminum
- Attached screen

Available in full box quantities only

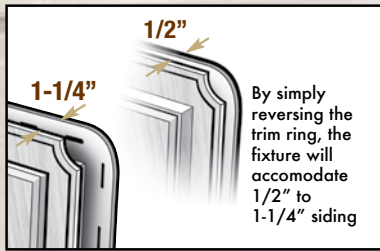


DESCRIPTION	PART #	NET FREE AREA	CTN. QTY	SKID
1.0"	61RAA10D	0.20 sq. in.	250	38700
1.5"	61RAA15D	0.43 sq. in.	120	15000
2.0"	61RAA20D	0.66 sq. in.	65	8125
2.5"	61RAA25D	1.31 sq. in.	85	10625
3.0"	61RAA30D	1.77 sq. in.	55	6875
4.0"	61RAA40D	2.85 sq. in.	30	3750
6.0"	61RAA60D	5.20 sq. in.	8	1000

We Know Ventilation!



Scalloped Series with reversible trim



Split Block

DESCRIPTION	PART #	CTN. QTY	SKID
White	641020-00	12	2304
White	641020-00B	75	2400

Recessed Electrical Block



DESCRIPTION	PART #	CTN. QTY	SKID
White	641040-00	12	2304
White	641040-00B	75	2400

Flush Electrical Block

- Reversible trim ring



DESCRIPTION	PART #	CTN. QTY	SKID
White	641050-00	12	1680
White	641050-00B	35	-

Jumbo Block

- 13" x 9" mounting size
- Reversible trim ring



DESCRIPTION	PART #	CTN. QTY	SKID
White	641030-00	12	432
White	641030-00B	24	432

Double Walled Recessed Electrical Block

- Reversible trim ring



DESCRIPTION	PART #	CTN. QTY	SKID
White	641090-00	12	1680
White	641090-00B	35	-

Surface Series Block

- 4.8" x 4.8" mounting size
- Double 4, 5, 6, 8 & 10
- Triple 3"
- Dutch Lap



DESCRIPTION	PART #	CTN. QTY	SKID
White	641060-00	12	1440
White	641060-00B	30	-

Mounting Block

- 5.5" x 6.5" mounting size
- Reversible trim ring



DESCRIPTION	PART #	CTN. QTY	SKID
White	641000-00	12	720
White	641000-00B	25	800

Electrical Plug Block



DESCRIPTION	PART #	CTN. QTY	SKID
White	641095-00	12	1260

Electrical Block

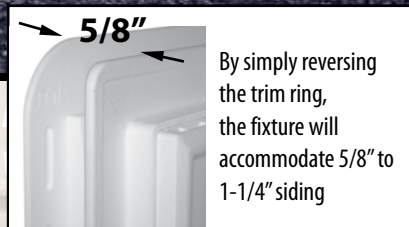


DESCRIPTION	PART #	CTN. QTY	SKID
White	641055-00	12	960



Plate Series with reversible trim

The **WeatherPRO® Plate Series** features molded rain channels that incorporate the principals of surface tension. Water cascades down the surface of the wall and is diverted through molded rain channels exiting over the rain flange.



WeatherPRO® Pro Light Block



DESCRIPTION	PART #	CTN. QTY	SKID
White	642145-00	12	1176

WeatherPRO® Pro Surface Block

• 4.8" x 5.8" mounting size



DESCRIPTION	PART #	CTN. QTY	SKID
White	642155-00	12	1176

WeatherPRO® Pro Recessed Electrical Block



DESCRIPTION	PART #	CTN. QTY	SKID
White	642125-00	12	1680

WeatherPRO® Pro Mounting Block

• 5" x 6" mounting size



DESCRIPTION	PART #	CTN. QTY	SKID
White	642165-00	12	1176

WeatherPRO® Pro Recessed Split Block



DESCRIPTION	PART #	CTN. QTY	SKID
White	642175-00	12	1680

WeatherPRO® Pro Mini Mounting Block

• 3.5" x 5" mounting size



DESCRIPTION	PART #	CTN. QTY	SKID
White	642135-00	12	1680

Dryer Vent Plate



DESCRIPTION.	PART #	CTN. QTY	SKID
White	646004-00	6	300

WeatherPRO® Rain Channels



duraflo® Color Options

30

Color Options



Before



After



Roof Vent Colors				
	BL - Black	BR - Brown	GR - Gray	WW - Weatherwood

Index

PART #	PAGE #	PART #	PAGE #	PART #	PAGE #
551142BL	22	6025BL	13	641030-00B	28
551143BL	22	6025BLF	13	641040-00	28
551144BL	22	6030-4BC	14	641040-00B	28
5511930	23	6032BL	15	641050-00	28
5511931	23	6032BR	15	641050-00B	28
551201BL	20	6033BL	15	641055-00	28
551202BL	20	6033BR	15	641060-00	28
551203BL	20	6035BL	18	641060-00B	28
551203WW	20	6050BL	10	641090-00	28
551204BL	20	6050BR	10	641090-00B	28
551222BL	21	6050G	10	641095-00	28
551222BR	21	6050WW	10	641604	27
551222G	21	6050TBL	10	641604BR	27
551222WW	21	6050TBR	10	641608	27
551224BL	21	6050TG	10	641608BR	27
551224BR	21	6050TWW	10	642125-00	29
551224G	21	6065BL	11	642135-00	29
551224WW	21	6065BR	11	642145-00	29
551233BL	22	6065G	11	642155-00	29
551233BULKBL	22	6065WW	11	642165-00	29
551244BL	22	6072METBL	12	642175-00	29
5950C	11	6072METBR	12	645080-00	26
5975B	11	6072METWW	12	646004-00	29
5975C	11	6073BL	12	646010-00	26
60RVA20MET	13	6075BL	10	646015	26
60RVA20US	13	6075BR	10	646015BR	26
60RVA208	13	6075G	10	646020-00	26
60PRO30BL	14	6075WW	10	646025-00	26
60PRO30BR	14	6094BL	12	648FTBL	27
60PRO31BL	14	61PML101	27	648FTBR	27
60PRO31BR	14	61PML151	27	648FTWH	27
60PRO50BL	9	61PML201	27	649000BL	26
60PRO50BR	9	61PML251	27	649000G	26
60PRO50G	9	61PML301	27		
60PRO50W	9	61PML401	27		
60PRO50WW	9	61PML501	27		
60PRO50SLBL	7	61PML601	27		
60PRO50SLBR	7	61RAA10D	27		
60PRO50SLG	7	61RAA15D	27		
60PRO50SLWW	7	61RAA20D	27		
60PRO75BL	8	61RAA25D	27		
60PRO75BR	8	61RAA30D	27		
60PRO75G	8	61RAA40D	27		
60PRO75W	8	61RAA60D	27		
60PRO75WW	8	620808	25		
60PRO117BL	5	620808COMB	25		
60PRO117BR	5	620808REC	25		
60PRO117G	5	620812	25		
60PRO117WW	5	620812COMB	25		
60PRO130BL	4	620812REC	25		
60PRO130BR	4	620816	25		
60PRO130G	4	621212	25		
60PRO130WW	4	621212COMB	25		
60PRO140BL	4	621212REC	25		
60PRO140BR	4	621218	25		
60PRO140G	4	626043-00	24		
60PRO140WW	4	626043-00B	24		
60PRO150BL	4	626045-00	24		
60PRO150BR	4	626045-00B	24		
60PRO150G	4	626053-00	24		
60PRO150WW	4	626053-00B	24		
6001BL	6	626055-00	24		
6001BR	6	626055-00B	24		
6001G	6	626058-00	24		
6001WW	6	626058-00B	24		
6008BL	16	626060-00	24		
6008BR	16	626060-00B	24		
6008WW	16	626075-00	24		
6010-1BC	16	626075-00B	24		
6010BL	16	626080-00	24		
6010BR	16	626080-00B	24		
6011BL	16	626095-00	24		
6011BR	16	626110-00	24		
6011WW	16	626120-00	24		
6012BL	17	641000-00	28		
6012BR	17	641000-00B	28		
6013BL	17	641010-00	26		
6013BR	17	641010-00B	26		
6013WW	17	641020-00	28		
6020BL	17	641020-00B	28		
6020BR	17	641030-00	28		
6021-4BC	17				

WE KNOW VENTILATION

duraflo[®] *Ventilation Systems*

Duraflo[®] products provide exceptional protection against weather infiltration. Many of our innovative products, along with our WeatherPRO[®] Series, are designed with ease of installation in mind. Cold impact resistance, patented baffle systems, UV protection and color selection make Duraflo products leaders in the construction industry.



duraflo[®]
WE KNOW VENTILATION



Eastern U.S. Customers

Tel: (289) 881-0120
Toll Free: 1-800-463-9572
Fax: (905) 844-0826

www.ipexna.com | sales@ipexamerica.com

Western U.S. Customers

Tel: (303) 373-1918
Toll Free: 1-888-461-5307
Fax: (303) 373-1923