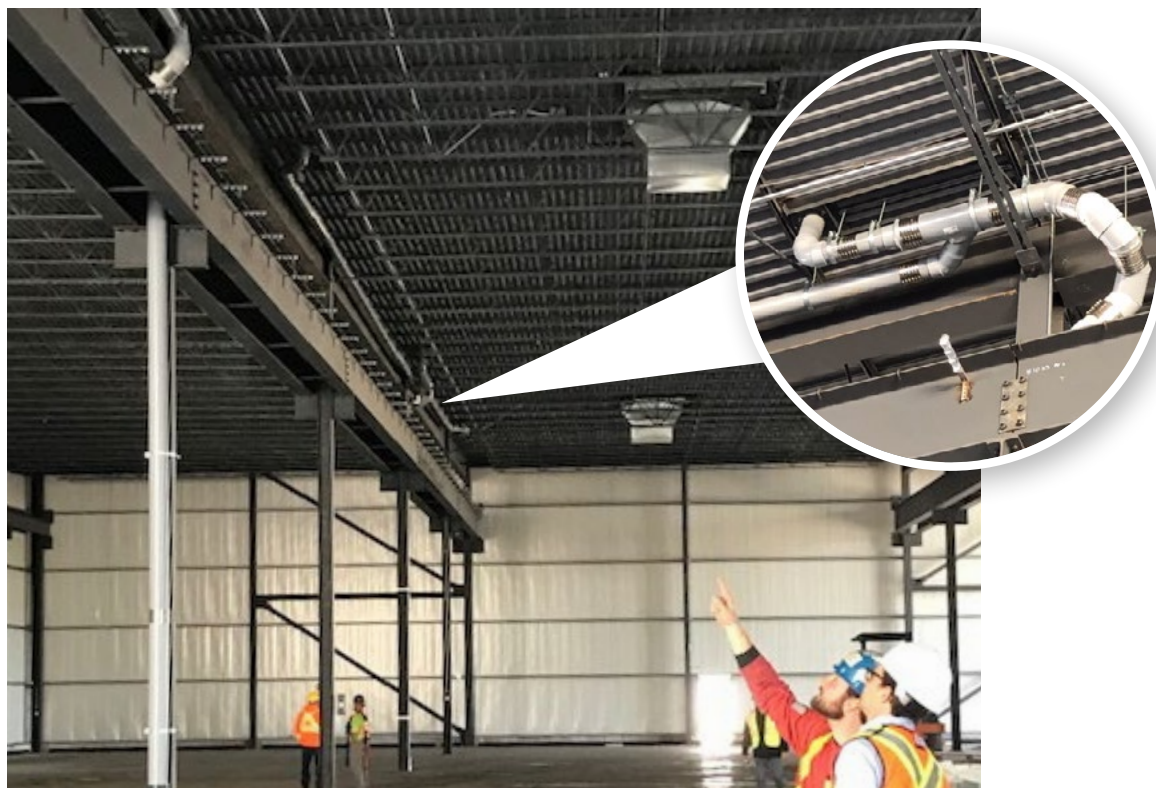


MJ Grey™ Makes Connections in Windsor



In spring 2019, a new Windsor warehouse for Erie Architectural Products was under construction. Bryant Heating, Air Conditioning & Plumbing used System 15® PVC in 6", 8", and 10" diameters to install the rainwater leaders.

In April IPEX Sales Representative, Patrick Bergeron, visited the warehouse and met with site foreman, Grant Thomas. Thomas mentioned that the MJ Grey™ Mechanical Couplings were making it much easier to do the 8" and 10" install with the height and space challenges in the warehouse. When Bergeron told Thomas that the couplings had just become available in 6" diameter, Thomas immediately placed an order so that all the connections

“MJ Grey allows you to install at your own convenience, give it a snug fit, and then turn the fitting to the appropriate angle or slope. If a mistake is made, you have the ability to remove and re-use the material.**”**

Grant Thomas
Foreman of Windsor Warehouse

on the project would be MJ Grey Mechanical Couplings instead of solvent welds.

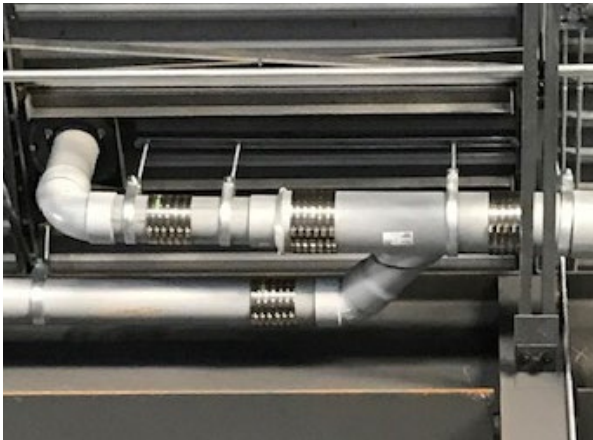
The 49,776 sq. ft. warehouse was large enough that the crew could use 20' lengths of System 15, but working with this length of large diameter pipe 35 ft above a warehouse floor is a big

MJ GREY™ Mechanical Couplings

- » Sizes 1-1/2" to 18"
- » An alternative to solvent welding
- » Allows for limited joint deflection
- » Faster and easier installation with less labour
- » Used with System 15® and System XFR® DWV piping
- » Certified to CSA B602 and Listed to ULC 102.2/10



challenge when solvent welding. Using MJ Grey Mechanical Couplings made the job easier and meant cost savings, too. Thomas explained, "I didn't need as much manpower. It only required two of us on a lift. If we were solvent welding, we would have required a second lift at times with another person at the other end to support the pipe. It requires much less physical strain to install using the MJ Grey system."



Thomas said that MJ Grey had other advantages, as well. "There are big advantages to using mechanical couplings with IPEX System 15®. When solvent welding large diameter pipe, you are under time pressure to apply the primer, cement, and line it up correctly. If you make a mistake solvent welding, the only solution is to cut the joint out. MJ Grey allows

you to install at your own convenience, give it a snug fit, and then turn the fitting to the appropriate angle or slope. If a mistake is made, you have the ability to remove and re-use the material."

Using MJ Grey™ Mechanical Couplings is an alternative to solvent welding System 15® and System XFR® DWV piping systems. Certified to CSA B602 and listed to CAN/ULC S102.2, MJ Grey Mechanical Couplings are available in 1-1/2" to 18" sizes. On large diameter joints, mechanical couplings are a great alternative to solvent welding when working in cold weather conditions or at heights in a scissor lift or bucket. MJ Grey Mechanical Couplings do allow for limited joint deflection to help accommodate small degrees of misalignment during installation.

ipexna.com | Toll Free: 1-866-473-9462

MJ Grey™, System 15® and System XFR® are trademarks of IPEX Branding Inc.

