

## IPEX Ultra-Rib® Flat Top Adapters

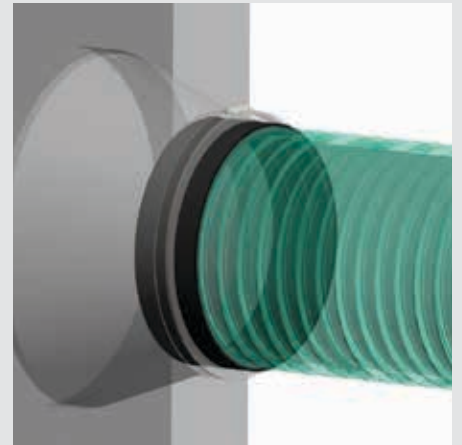
The IPEX Ultra-Rib Flat Top Adapter is specifically designed to connect Ultra-Rib PVC Pipe to a Rubber Boot Connector. Made from a profile extruded rubber, the Flat Top Adapter allows for an easy, watertight assembly for concrete manholes or catch basins.

Flat Top Adapters are available to fit Ultra-Rib pipes from 300mm to 600mm (12" – 24").

Ultra-Rib Pipe Size (mm)	Adapter Size (in.)	Adapter Part Number
300	12	087025
375	15	087026
450	18	087027
525	21	087028
600	24	087029

### Features and Benefits:

- Maintains a resilient water tight rubber connection that prevents infiltration and exfiltration
- Meets the performance requirements ASTM C923 – Standard Specification for resilient connectors between reinforced concrete manhole Structures, Pipes, and laterals
- Tested to a maximum axial deflection of 7 degrees
- Avoids the need for messy grout and waiting for cure time



## How to Install Ultra-Rib® Flat Top Adapters

### STEP 1:

Remove the "Ultra Rib" gasket from the pipe.



### STEP 2:

Flip the rubber manhole adapter so that the protrusions are on the outside.



### STEP 3:

Slide the adapter down the length of pipe until the desired depth is achieved.



### STEP 4:

Using the edge closest to the pipe end, flip the adapter over itself so that the flat surface is facing up.



### STEP 5:

Make necessary adjustments to the adapter to ensure that protrusions are laying within the ribs of the pipe and the adapter surface is smooth and flat.



### STEP 6:

Position the pipe in the rubber boot connector so that the reinforcing strap(s) provided with the boot sleeve is straddled over a rib (see image). Ensure boot manufacturer's strap recommendations are followed as, one or two straps may be required. Tighten strap(s) to manufacturer recommended torque values.



### Contact us

Visit our website: [ipexna.com](http://ipexna.com)

Toll Free: (866) 473-9462

Products are manufactured by IPEX Inc.  
Ultra-Rib® is a trademark of IPEX Branding Inc.