

SCEPTACON™ electrical raceway joint design

SceptaCon Trenchless Raceway has been re-engineered to improve ease of assembly, strength and durability. The SceptaCon joint features internal stopping features that gradually stop the spigot during insertion to avoid bottoming out within the bell, which avoids the possibility of over insertion.

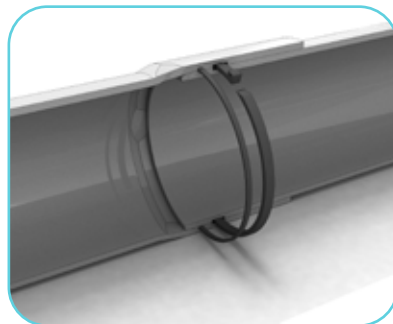
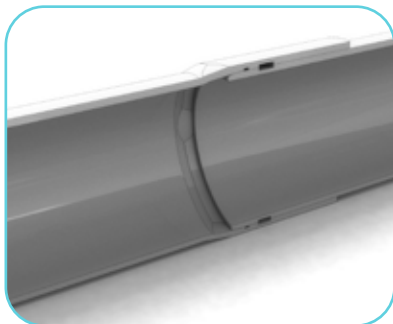
Made from durable Schedule 40 PVC, SceptaCon is a proven mechanical, spline-locking system designed specifically for horizontal direction drilling. Approved for a 65 ft bend radius – the same as most drilling rods – SceptaCon can effectively bend around obstacles such as rocks and other utilities.

SceptaCon is available in sizes 2" – 6" (53mm – 155mm) in both 10 ft and 20 ft lengths making SceptaCon easy to transport and handle on the jobsite compared to large HDPE reels and coils.

As the only approved boreable electrical raceway available in a 2" size, SceptaCon is ideally suited for street lighting and traffic signal cables.

SceptaCon product selection chart

Dimensions		Product Code 10'	Product Code 20'
in	mm		
2	53	-	106421
3	78	106430	106431
4	103	106440	106441
5	129	106450	106451
6	155	106460	106461



Features and Benefits:

- Less space and easier to handle
- Save time and money
- No cementing or lubrication required
- Fusion-free joints
- Standard Bend Radius: 65 feet
Rated Pulling Force: 3,000 lbs
Maximum Pressure Rating: 85 psi

Standards:



CSA C22.2 No. 211.2
UL 651



Contact us

Visit our website: ipexna.com

Toll free Canada: (866) 473-9462

Products manufactured by IPEX Electrical Inc.
SceptaCon™ is a registered trademark of IPEX Branding Inc.